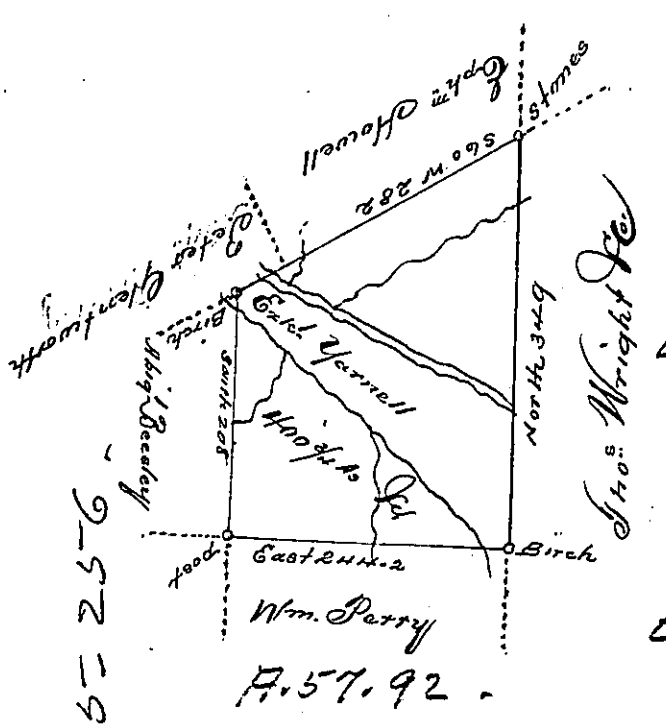


Foster -
Luzerne

Z-138.



E-578.

E-575.

A Draft of a tract of land Called _____ Situate on the waters of Nescopeck in the
 County of Luzerne. Containing four hundred acres $\frac{3}{4}$ & Allow^c. Surveyed
 for Ezekiel Yarnell the 15th day of June 1793 by virtue of a warrant
 dated the 24th ^{day of} Decr. 1792.

by
 Wm Gray D.J.

Daniel Bradhead Esq^r.
 Survt. Genl.

IN TESTIMONY that the above is a copy of the original remaining on file in the
 Department of Internal Affairs of Pennsylvania, made conformably to an Act of Assembly approved the 16th day of
 February, 1833, I have hereunto set my Hand and caused
 the Seal of said Department to be affixed at Harrisburg, this
 fourth _____ day of February _____ 1896.

James W. Latta
 Secretary of Internal Affairs.